

CASIO® IT-600



Rugged and versatile
PDA style data
terminal with a leading
edge scanner and
optional 1.0 megapixel
digital camera

CASIO® IT-600

Wireless technology at its best.

- **Rugged design**, with IP54 water and dust resistance, for use in challenging environments
- **Microsoft Windows CE 5.0 OS** for reliable and flexible application development
- Bright, large VGA **colour screen** for comfortable viewing indoors or outdoors
- miniSD™ card slot for **extra storage**
- Integrated, high-performance **laser scanner** capable of reading industry standard barcodes
- **1.0 megapixel camera**, with Casio proprietary digital technology for bright photos in lowlight conditions (IT-600M30C/M30CR models)
- **Wireless communications** with standard Bluetooth™ connection, optional WLAN IEEE802.11b/g (IT-600M30R/M30CR models) and optional GRPS via third party expansion module
- **Compliant with EU Restriction of the Use of Certain Hazardous Substances in Electrical and Electronic Equipment directive (RoHS)**



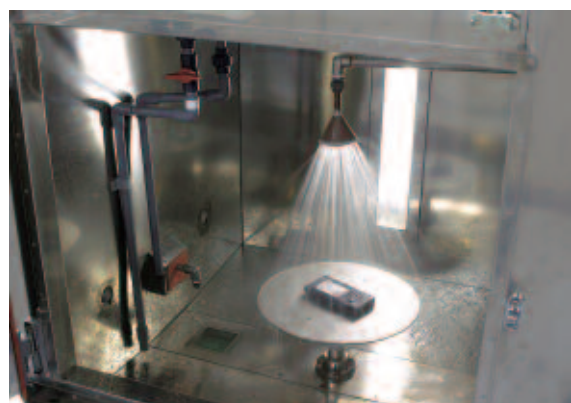
Improve your productivity with the advanced, high speed laser scanning engine

The Casio IT-600 features a high-speed, sensitive laser scanner to make scanning easier and more effective. With the ability to control the beam swing angle, as well as a vibrating scan

confirmation for noisy environments, accurate scanning is assured. The IT-600's lightweight and ergonomic design mean that it can be comfortably used all day. And with a choice of three scanning buttons one at the front and either side of the terminal, user comfort is further enhanced.

Rugged design for use in challenging environments

Challenging the conventions of data terminal design, the IT-600 is a rugged construction with stylish good looks. To ensure maximum durability in all weather conditions and harsh handling by users, the IT-600 has been subjected to rigorous testing, including being dropped from a height of 1.2 metres (4 feet) onto concrete. In compliance with International Standard IEC60529, it has been rated to protection level 5 for dust resistance and level 4 for water splash resistance.





Secure wireless communications

To ensure true mobility, the IT-600 is available with built-in high-speed WLAN using either the IEEE802.11b or IEEE802.11g standards (IT-600M30R/M30CR

models). Security is ensured with advanced, industry standard encryption and authentication capabilities. This makes the IT-600 ideal for use in warehouse or retail environments, where seamless connection to remote computers is crucial to stock management and to allow non-desk bound staff access to important company information.

The IT-600 also comes with Bluetooth™ Version 1.2 as standard allowing it to connect to Bluetooth devices, such as printers, for easy data transfer.

For remote data transmission, the IT-600 supports GPRS communications via a third party expansion module.



Casio proprietary digital camera technology for photos in all light conditions

The supersensitive CCD 1.0 megapixel digital

camera (IT-600M30C/ M30CR models) allows full colour photos to be taken with the IT-600. With Casio's proprietary digital technology, photos can even be taken in lowlight environments and still come out bright and detailed – without the need for a flash.

The digital camera technology is ideally suited to the parking enforcement industry, where photographic evidence is required regardless of the lighting conditions.

Convenient programming with Windows CE 5.0 operating system

The IT-600 uses Microsoft Windows CE 5.0 operating system. This open architecture, scalable, 32-bit operating system allows a wide range of innovative applications to be developed for the IT-600.

Enhanced battery life

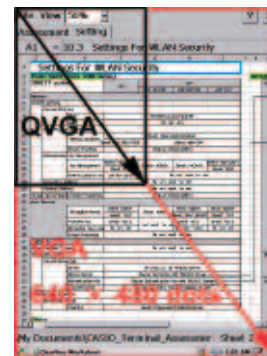
The IT-600 has been designed to maximise battery life and to ensure long operation times on every charge. There are two battery sizes available, standard is 1,850mAh and large is 3,700mAh.

Auto-recovery mode to eliminate lost files

A useful feature of Casio data terminals is the Auto-recovery mode. Utilising approximately 60MB of on-board Flash storage, software can be configured to back-up all files and settings ensuring you never have the inconvenience of losing your information when the battery is not charged.

miniSD™ card slot for additional storage

When more storage is required, a miniSD card slot is integrated inside the battery compartment of the IT-600. This allows the storage of additional mission critical data or other large files such as digital photos.



Bright, clear 3.7 inch VGA colour screen

The large, transfective LCD screen is capable of displaying 65,536 colours and allows applications with detailed screens to be developed which can be comfortably viewed for a full working shift. And because the screen utilises

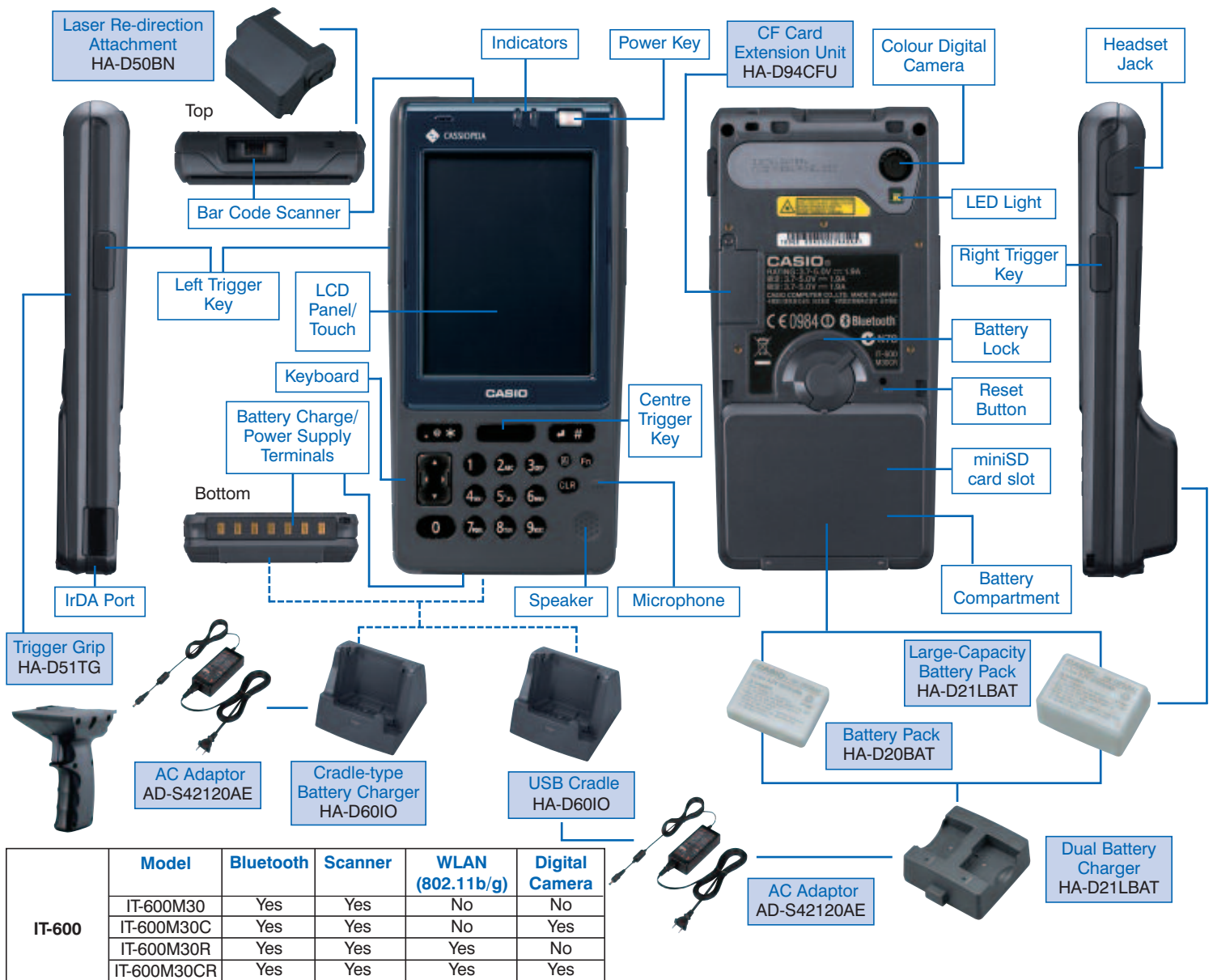
transfective technology the IT-600 can be used in all light conditions from dark environments to bright sunlight, without losing screen visibility. To reduce power consumption the screen incorporates an LED backlight.

Trigger grip option now available

For environments such as retail stocktaking and warehouse stock control where repetitive scanning is required, a trigger grip option is available for the IT-600.



IT-600 - General Information



IT-600 - Specifications

CPU	Intel® PXA270 Application Processor (520MHz)	Buzzer	
OS	Microsoft® Windows® CE 5.0 English version	Sound Volume	2 levels
Memory		Vibrator	Standard
RAM	64MB	Wireless LAN	
FROM	128MB (user area: approx. 60MB)	Standard Security	IT-600M30R/30CR: IEEE802.11b/g
Scanner		Digital Camera	IT-600M30R/30CR: WEP, TKIP, MS-PEAP, EAP-TLS, WPA, WPA-PSK
Type	Semi-conductor laser	CCD sensor	IT-600M30C/M30CR: Approx 1,000,000 pixels
No. of scanning	100 per second	Power Supply	
Resolution	0.127mm	Operation	Lithium-ion battery pack: Standard (1,850mAh)/Large (3,700mAh)
Readable distance	40-300mm: Standard	Operation time per charge	IT-600M30/30C: Standard: Approx. 11 hours, Large: Approx. 22 hours, *display: calculation: scanning = 20 : 1 : 1
Readable barcodes	0-200mm: With Laser Re-direction Attachment (option)		IT-600M30R/30CR: Standard: Approx. 10hours, Large: Approx. 20 hours, *display: calculation: scanning: wireless = 20: 1: 1:1
	UPC-A/E, EAN, NW-7, ITF, CODE39, MSI, Industrial 2 of 5, CODE93, CODE128, IATA, EAN128, RSS14, RSS Limited, RSS Expanded	Memory backup	Lithium battery (rechargeable) on board
Display		Dimensions/Weight	
Display Input	3.7-inch transfective TFT colour LCD (480x640 dots)	External dimensions	Approx. 166 (H) x 82 (W) x 23 (D) mm
Keyboard	21 keys (incl. Numeric keys, Centre key, Cursor keys)	Weight	Approx. 290g (including standard battery)
Trigger key	3 keys (Left, Right & Centre)	Durability	
Touch panel	Yes	Dust/water splash proof	IP54
Infrared	IrDA1.3 (maximum : 4Mbps)	Drop durability	1.2m in height onto concrete
Serial	USB Version 1.1 (Host/Client)	Operable temperature	-10°C to 50°C
Bluetooth™	Bluetooth™ Version 1.2		

* Battery life estimates are based on operation at room temperature, using fresh batteries, with the CPU speed set to Automatic, and Backlight set to OFF.

Notes:

1. Microsoft, Windows and Windows logos are the registered trademarks or trademarks of Microsoft Corporation.
2. Bluetooth is a trademark owned by Bluetooth SIG, Inc., U.S.A., and has been used in accordance with a license acquired by CASIO.
3. Other company and product names are generally registered trademarks or trademarks of the respective companies.
4. Specifications in the table above are current as of December 2006, and may change without any advance notice.